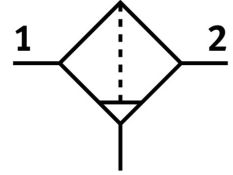



# Filter MS4-LF-1/4-ERM

Part number: 529399

FESTO



 General operating condition

## Data sheet

Feature	Value
Size	4
Series	MS
Mounting position	Vertical +/-5°
Grade of filtration	40 µm
Condensate drain	Manually rotating
Design	Sintered filter with centrifugal separator
Bowl guard	Plastic bowl guard
Degree of condensate separation	>75 %
Symbol	00991519
Operating pressure	0 bar ... 14 bar
Standard nominal flow rate (standardised to DIN 1343)	1700 l/min
Operating medium	Compressed air to ISO 8573-1:2010 [-:9:-] Inert gases
Corrosion resistance class CRC	2 - Moderate corrosion stress
LABS (PWIS) conformity	VDMA24364-B1/B2-L
Storage temperature	-10 °C ... 60 °C
Suitable for use with food	See supplementary material information
Air purity class at output	Compressed air to ISO 8573-1:2010 [7:8:4]
Media temperature	-10 °C ... 60 °C
Ambient temperature	-10 °C ... 60 °C
Pore size	<40 µm
Product weight	189 g
Type of mounting	Either: In-line installation With accessories
Pneumatic connection, port 1	G1/4
Pneumatic connection, port 2	G1/4
Note on materials	RoHS-compliant
Material sub-base	Die-cast aluminium
Material seals	NBR
Material filter	PE
Material housing	Die-cast aluminium
Material bowl	PC
Material separating plate	POM