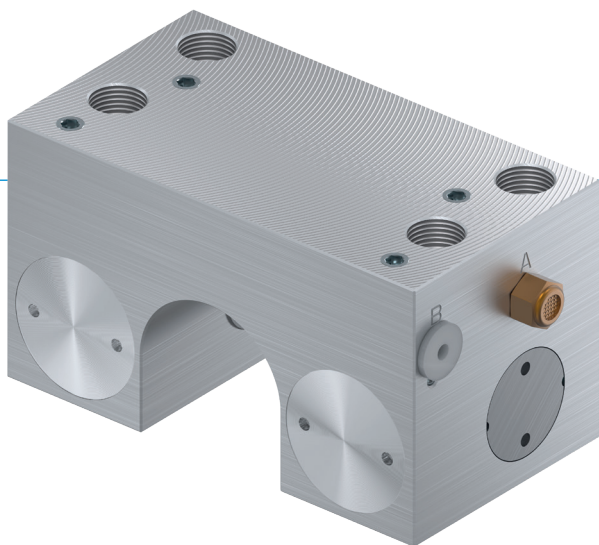


CLAMPING ELEMENTS | PNEUMATIC SERIES MKR

▶ PRODUCT ADVANTAGES



- ▶ **Independent of the manufacturer**
For circular guides and shaft guides
- ▶ **Energize to close (NO)**
Closing with pressure
- ▶ **high durability**
Up to 5 million static clamping cycles

▶ THE BEST PRODUCT FOR YOUR APPLICATION

APPLICATION SCENARIOS

- ▶ **Fixing of vertical axes**
- ▶ **Positioning of lifting units**
- ▶ **Clamping of machine tables**

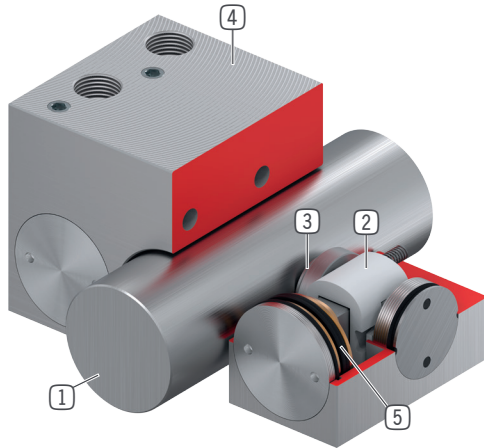
FURTHER INFORMATION

- ▶ **Special variants on request, e.g.**
With proximity switch monitoring
With additional air connection (from above, from the front)

▶ Technical data

Series	MKR
Shaft diameter	12-60 mm
Holding force	650-1850 N
Pressure min. / max.	3 / 6.5 [bar]
Spring storage	inexistent
PLUS connection	No
B10d value	up to 5 million
Dynamic braking cycles	not suitable
Operation	pneumatic
Operating temperature	-10 ... +70 [°C]
Shaft tolerance	+/- 0,01 mm
Hardness	min. 54 HRC

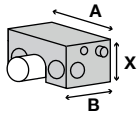
► BENEFITS IN DETAIL



- ① **Circular guide**
 - Compatible with circular and shaft guides
- ② **Wedge-type gear**
 - Power transmission between piston and clamping jaw
- ③ **Clamping jaw**
 - Pressed at the circular guide
- ④ **Housing**
- ⑤ **Pneumatic piston**
 - The piston moves the wedge-type gear longitudinally

► TECHNICAL DATA

► SERIES MKR CLAMPING NO (NORMALLY OPEN) OPEN WITHOUT PRESSURE



Order no.	Shaft Ø* [mm]	Holding force [N]	Holding torque [Nm]	A [mm]	B1 [mm]	X [mm]
MKR1000A	10	650	4	50	37	16
MKR1200A	12	650	4	50	37	18
MKR1500A-A	15	650	4	54	37	22
MKR1600A-A	16	650	5		37	22
MKR2000A	20	1000	10	66	38	25
MKR2500A	25	1200	15	77	42	30
MKR3000A	30	1750	26	92	48.5	35
MKR3200A	32	1850	37	120	49	45
MKR4000A	40	1850	40	120	49	45
MKR5000A	50	1850	46	132	49	50
MKR6000A	60	1850	56	142	49	50

*Min. hardness of 54 HRC